

LIGHT WOOD | WOOD | ACOUSTITECH LEAD 6, ACOUSTIVIBE SYSTEM (SOPREMA), ACOUSTITECH SOFIX, 5/8" PLYWOOD, RSIC-1 (PAC INTERNATIONAL) | NAILED DOWN

Acoustic performance

AllC: 62 to 65

ASTC: 61 to 63

ASSEMBLY DETAILS

STRUCTURE

Light wood

ASSEMBLY COMPONENTS

AcoustiTECH Lead 6, Acoustivibe System (Soprema), AcoustiTECH SOFIX, 5/8" plywood, RSIC-1 (PAC International)

FLOOR TYPE

Wood

INSTALLATION TYPE

Nailed down

CEILING TYPE

Acoustic insulator

NUMBER OF GYPSUM

2



AUSSI DISPONIBLE
ALSO AVAILABLE

*OTHER CEILING ISOLATORS AVAILABLE:

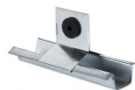
- [RSIC-1](#)
- [RC-1 BOOST](#)
- [TECSOUND CLG 3900](#)

ACOUSTITECH LEAD 6



Plus de détails

ACOUSTIVIBE SYSTEM (SOPREMA)



Plus de détails

ACOUSTITECH SOFIX



Plus de détails

RSIC-1 (PAC INTERNATIONA L)



Plus de détails