

## LIGHT WOOD | WOOD | ACOUSTITECH VP, ACOUSTIVIBE SYSTEM (SOPREMA), FERMACELL 2E32, 5/8" T&G PLYWOOD, RSIC-1 (PAC INTERNATIONAL) | FLOATING

Acoustic performance

AllC: 58 to 62

ASTC: 59 to 61

### ASSEMBLY DETAILS

#### STRUCTURE

Light wood

#### ASSEMBLY COMPONENTS

AcoustiTECH VP, Acoustivibe System (Soprema), Fermacell 2E32, 5/8" T&G plywood, RSIC-1 (PAC International)

#### FLOOR TYPE

Wood

#### INSTALLATION TYPE

Floating

#### CEILING TYPE

Acoustic insulator

#### NUMBER OF GYPSUM

2



AUSSI DISPONIBLE  
ALSO AVAILABLE

#### \*OTHER CEILING ISOLATORS AVAILABLE:

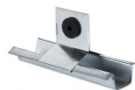
- [RSIC-1](#)
- [RC-1 BOOST](#)
- [TECSOUND CLG 3900](#)

#### ACOUSTITECH VP



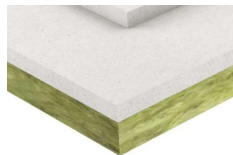
Plus de détails

#### ACOUSTIVIBE SYSTEM (SOPREMA)



Plus de détails

#### FERMACELL 2E32



Plus de détails

#### RSIC-1 (PAC INTERNATIONA L)



Plus de détails