

## LIGHT WOOD | WOOD | ACOUSTIVIBE SYSTEM (SOPREMA), ACOUSTIBOARD (SOPREMA), 5/8" T&G PLYWOOD, RSIC-1 (PAC INTERNATIONAL) | FLOATING

Acoustic performance

AllC: 57 to 61

ASTC: 56 to 59

### ASSEMBLY DETAILS

#### STRUCTURE

Light wood

#### ASSEMBLY COMPONENTS

Acoustivibe System (Soprema),  
Acoustiboard (Soprema), 5/8" T&G  
plywood, RSIC-1 (PAC International)

#### FLOOR TYPE

Wood

#### INSTALLATION TYPE

Floating

#### CEILING TYPE

Acoustic insulator

#### NUMBER OF GYPSUM

2

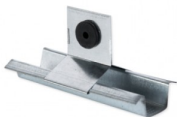


AUSSI DISPONIBLE  
ALSO AVAILABLE

#### \*OTHER CEILING ISOLATORS AVAILABLE:

- [RSIC-1](#)
- [RC-1 BOOST](#)
- [TECSOUND CLG 3900](#)

### ACOUSTIVIBE SYSTEM (SOPREMA)



Plus de détails

### ACOUSTIBOARD (SOPREMA)



Plus de détails

### RSIC-1 (PAC INTERNATIONAL)



Plus de détails