

LIGHT WOOD | LAMINATE | ACOUSTIVIBE SYSTEM (SOPREMA), INSONOFLOOR (SOPREMA), 5/8" T&G PLYWOOD, RSIC-1 (PAC INTERNATIONAL) | FLOATING

Acoustic performance

AllC: 52 to 55

ASTC: 53 to 56

ASSEMBLY DETAILS

STRUCTURE

Light wood

ASSEMBLY COMPONENTS

Acoustivibe System (Soprema),
Insonofloor (Soprema), 5/8" T&G
plywood, RSIC-1 (PAC International)

FLOOR TYPE

Laminate

INSTALLATION TYPE

Floating

CEILING TYPE

Acoustic insulator

NUMBER OF GYPSUM

2

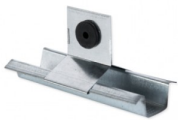


AUSSI DISPONIBLE
ALSO AVAILABLE

*OTHER CEILING ISOLATORS AVAILABLE:

- [RSIC-1](#)
- [RC-1 BOOST](#)
- [TECSOUND CLG 3900](#)

ACOUSTIVIBE SYSTEM (SOPREMA)



Plus de détails

INSONOFLOOR (SOPREMA)



Plus de détails

RSIC-1 (PAC INTERNATIONAL)



Plus de détails