

LIGHT WOOD | LAMINATE | ACOUSTIVIBE SYSTEM (SOPREMA), INSONOMAT (SOPREMA), INSONOFLOOR (SOPREMA), 1"1/2 CONCRETE TOPPING, 5/8" T&G PLYWOOD, RSIC-1 (PAC INTERNATIONAL) | FLOATING

Acoustic performance
 AIIc: 58 to 62
 ASTC: 58 to 62

ASSEMBLY DETAILS

STRUCTURE

Light wood

ASSEMBLY COMPONENTS

Acoustivibe System (Soprema),
 Insonomat (Soprema), Insonofloor
 (Soprema), 1"1/2 concrete topping, 5/8"
 T&G plywood, RSIC-1 (PAC International)

FLOOR TYPE

Laminate

INSTALLATION TYPE

Floating

CEILING TYPE

Acoustic insulator

NUMBER OF GYPSUM

2



AUSSI DISPONIBLE
 ALSO AVAILABLE

*OTHER MEMBRANES AVAILABLE :

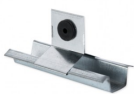
The Insonomat membrane (Soprema) can be substituted with the Silentcrete membrane (Soprema) and the Silent Floor Pur membrane (See assembly picture above).

**Perimeter decoupling: The use of Silent Edge (Rothoblaas) is strongly recommended to prevent lateral vibration transfer.*

*OTHER CEILING ISOLATORS AVAILABLE:

- RSIC-1
- RC-1 BOOST
- TECSOUND CLG 3900

ACOUSTIVI BE SYSTEM (SOPREMA)



Plus de
détails

INSONOMA T (SOPREMA)



Plus de
détails

INSONOFLO OR (SOPREMA)



Plus de
détails

RSIC-1 (PAC INTERNATI ONAL)



Plus de
détails

www.acousti-tech.com